

External Parasites of Sheep and Goats

by Clif Little, Extension Agent
Agriculture and Natural Resources
OSU Extension, Guernsey County
Phone: 740-432-9300

The following parasites affect Ohio sheep and goats: biting lice, sucking lice, nose bots, keds, myiasis (blowfly larvae), mites (mange), fleas, and flies (house & stable)



Pests of Sheep and Goats

- Keds "ticks"
- Lice
- Nasal Bots
- Wool Maggots
- Scab Mites



Keds



- A.K.A. wingless fly
- Reddish brown in color and resemble a tick.
- Utilize piercing and sucking mouth parts to feed on blood.
- Primarily found on sheep but will feed on goats.
- Ked numbers are lowest in the summer and highest during the winter.

Ked Life Cycle

- Spend their entire life cycle on the host.
- A single egg is produced and hatches inside the female, almost weekly. The larvae is expelled and glued to the fleece. Approximately three weeks later the adult fly emerges.
- Adults live 3-4 months and produce 10-15 offspring.

Control of Keds

- Treatment is recommended immediately after shearing in the fall or spring.



Sheep Lice



- Spend their entire life on their host.
- Lice of goats and sheep are host specific.
- Most species affecting sheep and goats live on the skin and surface feed on skin, hair or they suck blood.
- Eggs hatch in 9-12 days and the entire life cycle averages one month.

Control of Lice

- Usually requires at least 2 treatments, 2-3 weeks apart.
- Treated animals should be removed from untreated animals and their quarters.
- When possible treat all animals simultaneously and move to an uninfested area.

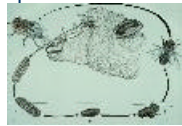
Nose Bot Fly



- The fly is yellow -brown.
- The flies deposit newly-hatched larvae near the nostrils. The bot larvae migrate up the nasal passage, feeding on mucus secretions until they reach the sinuses.
- The feeding may produce severe inflammation and bacterial infections.

Life Cycle of the Bot Fly

- The larvae remain in the head until they work their way out of the nostrils and pupate in the ground. In 3-6 weeks the adult flies emerge.
- It is not uncommon to experience 2 generations per year.



Control

- Presently we have only one approved product for control of nose bot – Ivomec Sheep Drench
- Treat after a hard frost when fly activity ceases to prevent re-infestation.
- Routine treatment is usually not necessary.

Wool Maggots



- Several species of blow flies
- Infest the wounds and soiled areas of livestock.
- Eggs are laid in these sites and the maggots feed and spread, attracting more flies.
- Infestations not treated may result in secondary infections and death.

Preventing Wool Maggot Losses

- Protect wounds immediately, as well as castration and docking wounds with a long lasting repellent.
- Infestations can be treated with insecticide sprays, and foams.

Mites-Mange or Scab

- Psoroptic and Sarcoptic mites feed on the surface of the skin or burrow into the skin. The feeding causes fluid discharge and a scaly inflamed area which may result in secondary infections.



Mites continued...

- Infestations are highly contagious requiring the entire flock to be treated. A second treatment is usually required 10 days later.
- Psoroptic mange (scabies) is a Federal Quarantine disease and must be reported to the state veterinarian and ODA.
- Flocks are quarantined and treated.

Products approved for use on Sheep & Non-lactating Goats

- **Permethrin & Piperomyl (Synergized Delice®)**
 - pour-on for sheep and premise
 - labeled for control of horn fly, lice, and keds.

Products continued ...

- **Diazinon (Dryzon®)**
 - 50%WP
 - 14 day Withhold.
 - Not for use on goats.
 - For control of lice, keds, and ticks.

Products continued ...

- **Fenvalerate (Ectrin®) (Vet-Shack®)**
 - 10%WDL
 - 2 day Withhold.
 - "Pour-on".
 - Do not treat lactating goats.
 - For control of: lice, keds, and ticks.

Products continued...

- **Methoxychlor (Marlate®)**
 - **NO LONGER BEING MARKETED**
 - 25% EC
 - 0 day Withhold.
 - "Spray" or "Dust".
 - Do not use on lactating goats.
 - For control of lice, keds, and ticks.

Products continued

- Permethrin (Ectriban®) (Hard-Hitter®) (Insectaban®) (Delice®) (Expar®)(Boss®, Permectrin II®)
- (various formulations)
- 0 day Withhold.
- "Spray", "Pour-On"
- For control of lice, keds, and ticks.

Products continued ...

- Ivermectin (Ivomec®)
- .08% Drench
- 11 day Withhold.
- Controls internal parasites, ticks, lice and keds.

Products Continued...

- Synthetic Pyrethroid (GardStar®)
- 40% EC
- Labeled for Sheep & Goats
- No withholding